

Detection of DNAs derived from 7 animal species separately

1 2 3 4 5 6 7 8

Primer:

1pmol each / 20 μ l reaction mixture

Samples 50ng

1: water(no DNA)

2: caprine

3: bovine

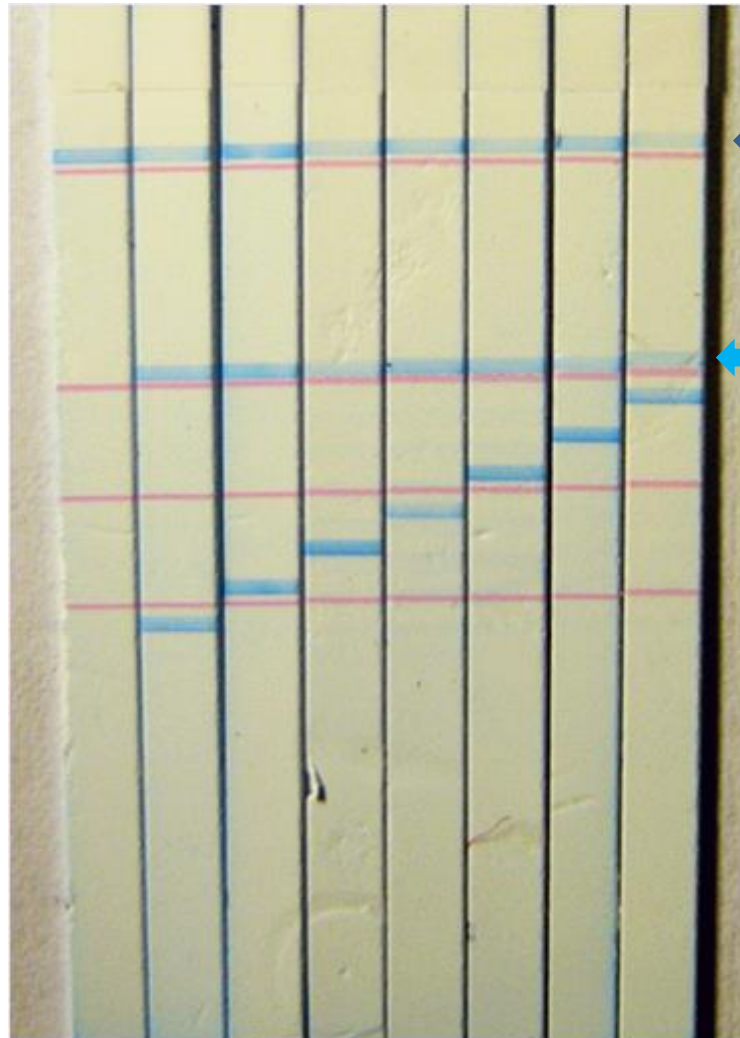
4: chicken

5: swine

6: equine

7: ovine

8: rabbit



Flow marker
(Developing agent came up to this point)

Band appears when DNA was derived from mammalian or chicken

PCR using 8 primer pairs mix and PAS (Printed Array Strip)